



19-20 Great Sutton Street, London, EC1V 0DR

Sublease on 1,400 sq ft of 3rd floor office space just off Clerkenwell Road.

Summary

Tenure	To Let
Available Size	1,400 sq ft / 130.06 sq m
Rent	£55 per sq ft
Service Charge	£5.70 per sq ft
Rates Payable	£17 per sq ft
EPC Rating	Upon enquiry

Key Points

- Cat A+ finish
- 2 meeting rooms
- Sublease until February 2028
- 7 Minutes from Barbican
- Air Conditioning
- Shower on the floor
- 7 Minutes from Farringdon

Description

Sublease on 1400 sq ft of 3rd floor office space just off Clerkenwell Road.
£55 per sq ft Rent
1 Executive office and a 6 person meeting room.
18 Desks, soft seating and a kitchen

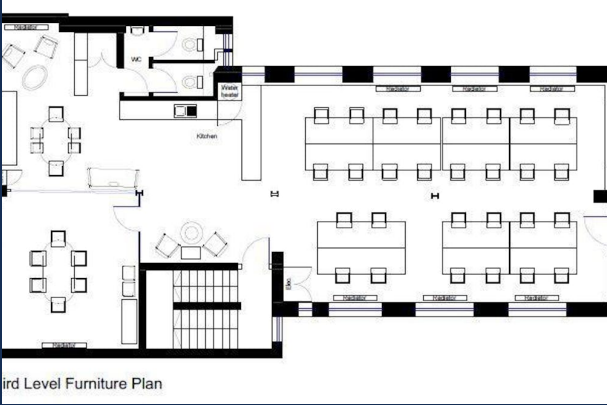
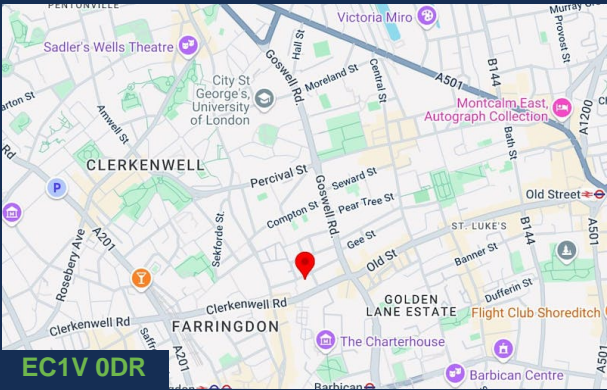
Location

Located on the south side of Great Sutton Street close to the junction with Berry Street and within 7 minutes of Barbican Underground Station.

Accommodation

The accommodation comprises the following areas:

Name	sq ft	sq m	Availability
3rd	1,400	130.06	Available
Total	1,400	130.06	



3rd Level Furniture Plan

Viewing & Further Information



Anton Grey
+44 (0)20 3141 6600 | +44 (0)7473 354 543
ahg@jamesandrew.co.uk



Lisa Moran
+44 (0)20 3141 6600 | +44 (0)7808 073 959
lmoran@jamesandrew.co.uk



The above information contained within this email is sent subject to contract. These particulars are for general information only and do not constitute any part of an offer or contract. All statements contained therein are made without responsibility on the part of the vendors or lessors and are not to be relied upon as statement or representation of fact. Intending purchasers or lessees must satisfy themselves, by inspection, or otherwise, as to the correctness of each of the statements of dimensions contained in these particulars. Generated on 07/08/2025

